



window system

Genesis SU

- Genesis SU – triple-chamber window system with thermal insulation featuring a specially designed frame shape that covers the entire height of the sash profile
- wide range of glazing for use of all types of single and double unit, acoustic or anti-burglary glass panes
- there are 2 options of movable posts: standard and narrow post for better light passage
- profile drainage available in two options: traditional and concealed
- the concealed sash system is the solution preferred by designers, enabling “window covering” in aluminium-glass structures; with the use of this type of solution, openable and fixed panels look identical from the outside
- available low threshold option for single and double rectangular balcony doors (structures with the use of dedicated profiles)
- possible profile bending (detailed specification of profiles and details of technical parameters of profile bending available in the authorised zone at www.aliplastpoland.com)
- wide range of colours – RAL palette (Qualicoat 1518), textured colours, Aliplast Wood Colour Effect – wood-like colours, Aliplast Loft View – colours imitating stone surfaces (Qualideco PL-0001), anodised colour (Qualanod 1808), bi-colour

window system

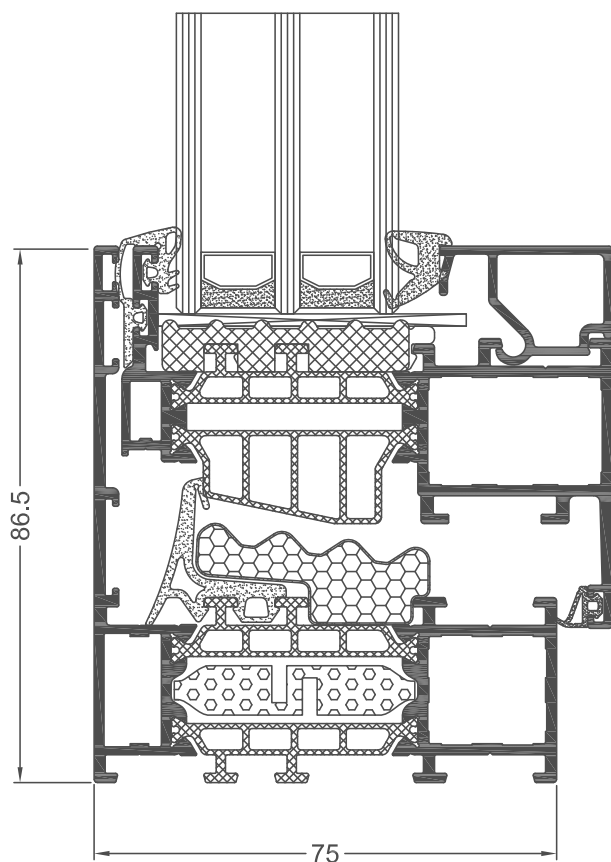
technical specification

system	material	depth of frame	depth of sash	glazing range	type of windows
GN SU	aluminium / polyamid	75 mm	79.5 mm	max. 62 mm / fix 59 mm	inswing, fixed window, hidden sash

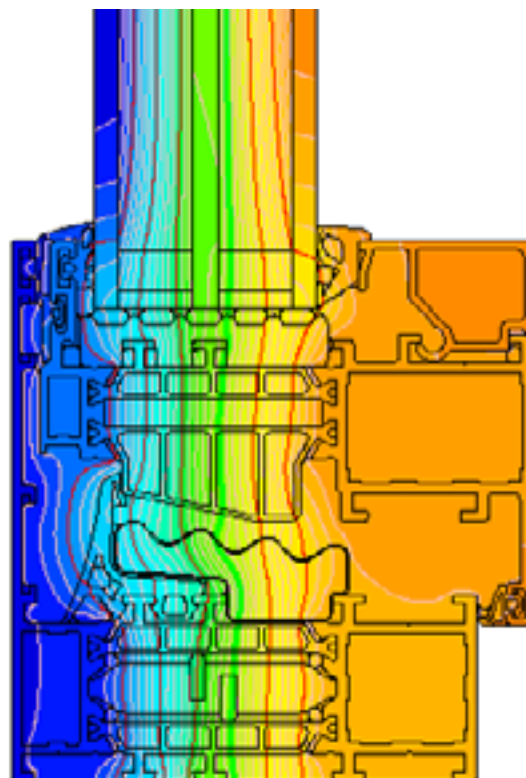
performance

system	thermal insulation U_f^*	air permeability	windload resistance	watertightness
GN SU	U_f from 1.47 W/m ² K	Class 4; EN 12207	Class C5/B5 (2000 Pa); EN 12210	Class E1950 (1950 Pa); EN 12208
GN SU i	U_f from 0.82 W/m ² K	Class 4; EN 12207	Class C5/B5 (2000 Pa); EN 12210	Class E1950 (1950 Pa); EN 12208
GN SU i+	U_f from 0.79 W/m ² K	Class 4; EN 12207	Class C5/B5 (2000 Pa); EN 12210	Class E1950 (1950 Pa); EN 12208

* Thermal insulation is dependent on a combination of profiles and thickness of the filling



cross-section of the GN SU i+ window (GN910 + GN920)



example isotherm arrangement for the assembly of the frame and window sash of the GN SU i+ window system (GN910 + GN920)